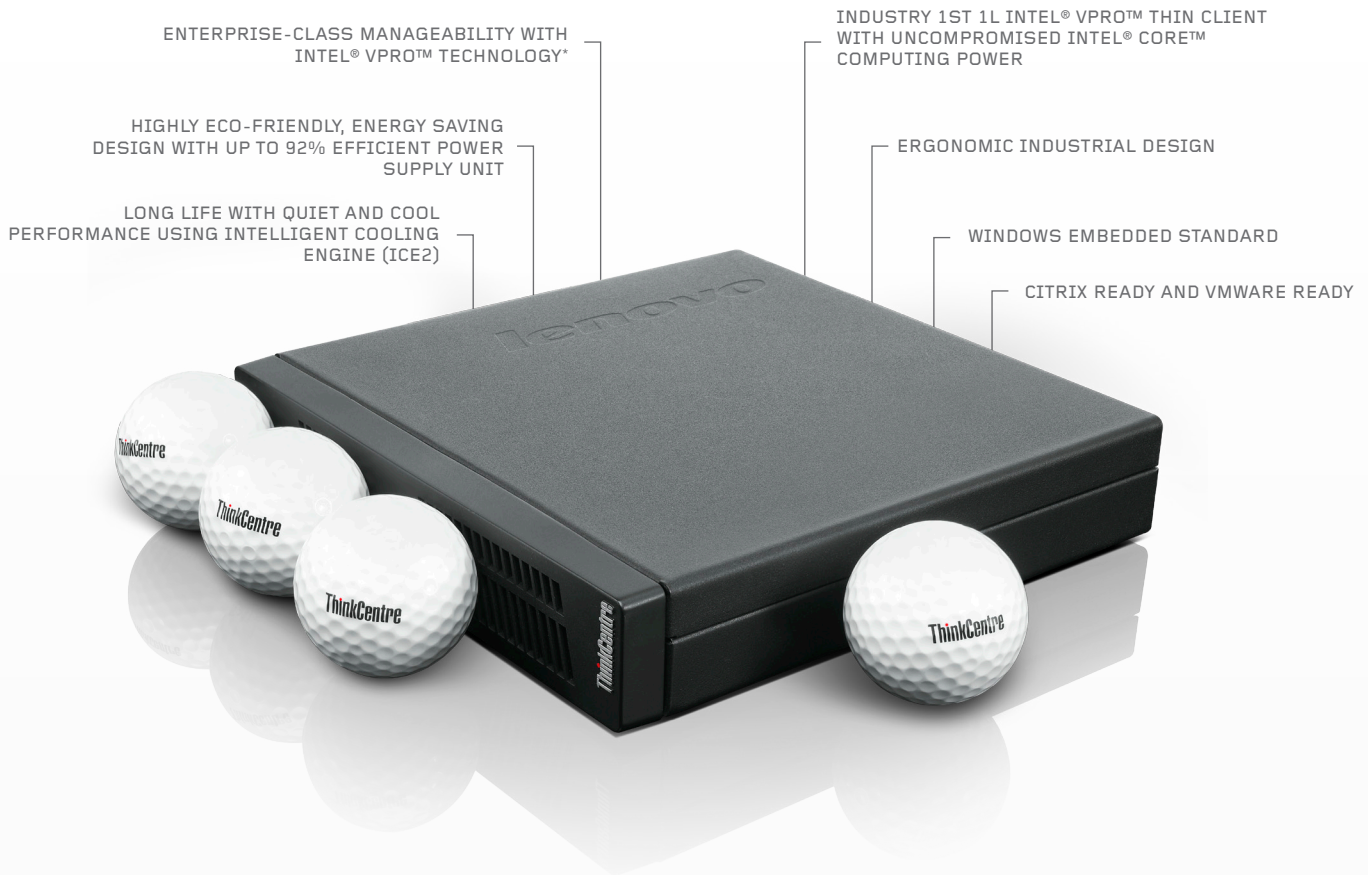


**THE LENOVO THINKCENTRE M92p/M92/M72e TINY THIN CLIENT**

**UNCOMPROMISED PERFORMANCE IN A 1 LITER FORM FACTOR**



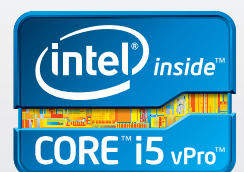
The Lenovo® ThinkCentre® M92p is designed for extended lifespan with reliability, manageability, and sustainability. Desktop maintenance is hassle free with 15 month life cycle and high platform stability through Intel® Stable Image Platform Program (SIPP). In addition, the Intelligent Cooling Engine (ICE2) helps you manage desktop acoustics and cooling as required.

The new tiny form factor is the industry first 1L Intel® vPro™ desktop along with VESA mount support for multiple mounting options – including at the back of a supported monitor.

Powered by the latest 3rd Generation Intel® Core™ processors, the ThinkCentre® M92p provide uncompromised performance. The ThinkCentre M92p offers all that you need to work in peace of mind – the best performance, enhanced productivity, and renowned reliability.

Apart from these features, the Tiny Thin Client is Citrix ready (powered with Citrix receiver agent) and VMWare ready (powered with the VMWare view software) to meet your enterprise computing challenges.

\* Selected Models



### ENTERPRISE-CLASS PRODUCTIVITY

- Latest 3rd Generation Intel® Core™ processors for uncompromised performance
- Support for quad display via Mosaic mode<sup>1</sup> multi-display technology for exclusive viewing

### DESIGNED FOR LONG LIFE AND USABILITY

- Constant image and 15 months life cycle with Intel® Stable Image Platform Program (SIPP) offers high platform stability
- Simplified desktop and cloud management with the Intel® vPro™ support

1 M92p/M92 only - Requires optional DP and two additional DP to 2 DP Dongles

### ECO-FRIENDLY GREEN SOLUTIONS

- Certified by ENERGY STAR 5.2, EPEAT® Gold and UL Environment Gold
- 80 Plus® Platinum power saving unit with 92% energy efficiency

## LENOVO SERVICE

Lenovo® offers a comprehensive portfolio of award-winning services to support and protect your ThinkCentre® investment. Succeed with substance, and let Lenovo's Service support you all the way.

### Warranty Extensions (1 to 5 Years Total Duration)

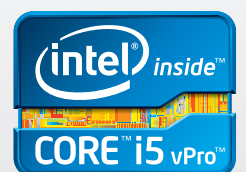
This fixed-term, fixed-cost service helps accurately budget for PC expenses, protect your valuable investment, and potentially lower the cost of ownership over time.

### Asset Tagging

Systems can come equipped with a professional, flexible asset tag based on your exact specifications. PCs are easily identifiable and trackable right out of the box.

### Asset Recovery Service

Helps you mitigate the environmental and data security risks associated with end-of-life asset disposal with secure, documented disposition of IT assets and data.



**OPTIONS AND ACCESSORIES**



**ThinkVision LT2323z Monitor (3028-LB2)**

- Makes conference calls feel like being there
- 23-inch IPS panel supports 1920 x 1080 resolution
- USB 3.0 Hub
- DisplayPort and VGA monitor ports

[www.lenovo.com/support/monitors](http://www.lenovo.com/support/monitors)



**ThinkVision LT2452p (4420-MB2)**

- 24-inch IPS panel supports 1920 x 1200 resolution
- USB 2.0 Hub
- DisplayPort, DVI and VGA monitor ports

Note: For DisplayPort attachment, requires the Lenovo DisplayPort to DisplayPort Monitor Cable (0A36537)

[www.lenovo.com/support/monitors](http://www.lenovo.com/support/monitors)



**Lenovo DisplayPort to DisplayPort Monitor Cable (0A36537)**

- Attach a DisplayPort monitor to system's or graphics card DisplayPort monitor port.

[www.lenovo.com/support/monitoraccessories](http://www.lenovo.com/support/monitoraccessories)



**Lenovo DisplayPort to DVI Monitor Cable (45J7915)  
 Lenovo DisplayPort to VGA Monitor Cable (57Y4393)**

- Attach a DVI digital monitor, or VGA analog monitor to system's or graphics card DisplayPort monitor port

[www.lenovo.com/support/monitoraccessories](http://www.lenovo.com/support/monitoraccessories)



**Lenovo DisplayPort to Dual-DisplayPort Monitor Cable (0B47092)**

- View more data with additional monitors
- Attach two DisplayPort monitors to a single systems' DisplayPort monitor port

[www.lenovo.com/support/monitoraccessories](http://www.lenovo.com/support/monitoraccessories)



**Lenovo Ultrastim Plus Wireless Keyboard and Mouse (0A34032)**

- Eliminate cables using reliable 2.4GHz wireless keyboard and mouse combination

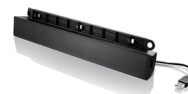
[www.lenovo.com/support/keyboards](http://www.lenovo.com/support/keyboards)



**ThinkCentre Extend Arm (57Y4352)**

- Improve viewing comfort using tilt adjustment or pivot for portrait or landscape viewing
- Extend forward or collapse backward to move monitor out of the way when not in use.
- 10.6-inches (270-mm) of height adjustment

[www.lenovo.com/support/monitoraccessories](http://www.lenovo.com/support/monitoraccessories)



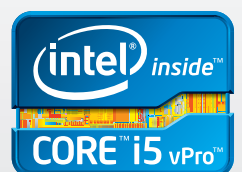
**Lenovo USB Soundbar (0A36190)**

- Add stereo audio sound
- Powered by USB port eliminates the external AC power adapter

[www.lenovo.com/support/audio](http://www.lenovo.com/support/audio)



1 M92p/M92 only - Requires optional DP and two additional DP to 2 DP Dongles



## SPECIFICATIONS

OPERATING SYSTEM	PROCESSOR	SPEED
Genuine Windows® Embedded Standard 7E (WES-7E)	3 <sup>rd</sup> Generation Intel® Core™ i5-3470T Processor (M92p) Intel® Celeron™ G460 (M92,M72e)	1.8GHz, 1.5MB Smart Cache, 1033MHZ
TYPE	CHIPSET	TPM <sup>3</sup>
Standard MTM	Intel Q77 (M92p/M92) and Intel H61 (M72e)	Yes
SSD	RAM	DIMM SLOTS (FREE)
Sandisk SSD 8GB	2GB DDR3 1600Mhz	2 (1)
NETWORK	USB PORT	VGA
Intel Ethernet integrated	<b>M92p/M92</b> 2 USB 3.0 (Front) 2 USB 3.0 (Back) 1 High Speed USB 2.0 (Back) <b>M72e</b> 2 USB 2.0 (Front) 3 USB 2.0 (Back)	VGA onboard
KENSINGTON SLOT	POWER SUPPLY	VIDEO
yes	WW auto-sensing 100-240 VAC, 50/60 Hz, External Energy Star Adapter 87%	Intel® Integrated HD Graphics
MORE INTERFACES	LANGUAGES <sup>4</sup>	WARRANTY
Display Port, RJ-45, microphone, headphone	Chinese (China only), English, Japanese (Japan only)	3 year depot
DIMENSIONS (WXDXH)	WEIGHT	
34.5 x 182 x 179 mm	2.9 lbs	

<sup>3</sup> Available on M92p/M92

<sup>4</sup> Other languages available via downloa

## SOFTWARE IMAGE DETAILS

### PRELOADED OPERATING SYSTEMS

Genuine Windows® Embedded Standard 7E

### PRE-LOADED APPLICATIONS

- Microsoft® RDP 7.1 w/RFX
- Citrix ICA / HDX
- Citrix Receiver 13.1
- VMWare View 5.1
- XL Manage
- Internet Explorer 9 (IE 9)
- Enhanced Write Filter and File-based Write Filter
- Microsoft® firewall
- Password Log-On Manager
- Adobe® Reader 10.1.3
- Adobe® Flash Player
- Silverlight 5.1
- Windows® Media Player 12.0
- ThinPrint Client 8.6



 [WWW.LENOVO.COM](http://WWW.LENOVO.COM)

©2012 Lenovo. All rights reserved.

**Availability:** Offers, prices, specifications, and availability may change without notice. Lenovo is not responsible for photographic or typographic errors. **Warranty:** For a copy of applicable warranties, write to: Warranty Information, 500 Park Offices Drive, RTP, NC, 27709, Attn: Dept. ZPYA/B600. Lenovo makes no representation or warranty regarding third-party products or services. **Trademarks:** Lenovo, the Lenovo logo, Rescue and Recovery, ThinkStation, ThinkVantage and ThinkVision are trademarks or registered trademarks of Lenovo. Microsoft, Windows, and Vista are registered trademarks of Microsoft Corporation. Intel, the Intel logo, Intel Core, Core Inside, Xeon and Xeon Inside are registered trademarks of Intel Corporation in the U.S. and other countries. Other company, product, and service names may be trademarks or service marks of others. Visit [Lenovo.com/safecomputing](http://Lenovo.com/safecomputing) periodically for the latest information on safe and effective computing.

WW/WW/DS/Q2-13/29521



THE LENOVO THINKCENTRE M92p/M92/M72e TINY THIN CLIENT